

BASKETS, PERFORATED STRAINER.....	14	PINS	
BOLTS (DOGS)		TOGGLE PIN	8
DOG BOLT	2, 3	PLATE LIFTING STRAPS	11
DOG BOLT WITH WING NUT	2	PORTLIGHTS	9
EYE BOLT	3	PORTLIGHT CHAIN	9
HATCH COVER DOG	3	PORTLIGHT COVER	9
"J" BOLTS.....	14	PORTLIGHT DOGS AND NUTS.....	9
JAW DOG	3	PORTLIGHT GLASS.....	9
LIFE BOAT TANK DOGS & NUTS.....	15	PORTLIGHT RETAINING RING WRENCH	9
METRIC DOG BOLT WITH WING NUT	2	PORTLIGHT SCREENS	9
PORTLIGHT DOGS AND NUTS.....	9	PROVISION TANK COVER	15
SHAPED HEAD DOG	3	RAT GUARDS	15
SKYLIGHT DOG	3	SAFETY GRATING	11
TANK COVER DOG	3	SAMPLING BOTTLES	12
"U" BOLTS	14	SCOOPS, SLUDGE	13
VENT DOG.....	3	SCUPPER PLUGS	8
WATERTIGHT DOOR DOGS	4, 5	SHAPED HEAD DOG	3
BUCKET, TANK CLEANING	13	SKYLIGHT DOG	3
BUSHINGS, WATERTIGHT DOOR	5	SOUNDING RODS	12
CABLE, NON-SPINNING	13	SPANNER WRENCH	12
CLAMP SCREW	10	STANCHIONS, GANGWAY	12
CLEVIS PIN	8	STRAINER BASKETS, PERFORATED METAL	14
COVERPLATE (BUTTERWORTH)	11	STRAINER PLATES	8
DECK COVER	10	STRAINER PLATE/ WITH BAFFLE	8
DECK COVER CAM	11	STUD (BUTTERWORTH)	11
DECK COVER LOCKING DOG.....	11	SWING NUTS	1
DECK SOUNDING PLUGS.....	12	SWIVEL HOOK (SAFETY)	13
DRAINS, DECK	8	TANK CLEANING BUCKET	13
EYE BOLT	3	TANK CLEANING COVERPLATE	11
FID, ALUMINUM	15	TANK CLEANING HOE	13
FLOATS (BALL)	14	TANKER PAILS.....	13
FOG GONG	15	TANK/HATCH COVER DOG	3
GASKET, COVER PLATE (BUTTERWORTH)	11	TOGGLE PIN	8
GLASS		TRI-CLAMP	10
PORTLIGHT GLASS	9	"U" BOLTS	14
SIGHT GLASS INSPECTION	7	ULLAGE ASSEMBLIES	6
HATCH COVER DOG	3	ULLAGE COVERS	7
HINGE PIN	8	ULLAGE SCREEN	6, 7
LIFE BOAT PROVISION TANK	15	ULLAGE SUB-ASSEMBLIES.....	7
LIFE BOAT TANK DOGS & NUTS	15	UNIVERSAL JOINT.....	12
MESH, REPLACEMENT	7	VENT DOG.....	3
METRIC DOG BOLT WITH WING NUT	2	WASHER/SHIM	5
NON-SPINNING CABLE.....	13	WATERTIGHT DOOR BUSHINGS.....	5
NUTS		WATERTIGHT DOOR DOGS	4, 5
CAP NUT	11	WEDGES, DOOR	5
HEX NUT	11	WING NUTS.....	1
SWING NUTS	1	WRENCHES	
WING NUTS.....	1	CLAW TYPE VALVE WHEEL WRENCH.....	12
O-RING.....	10	SPANNER HOSE WRENCH.....	12
PINS		"T" WRENCH	10
CLEVIS PIN	8	VALVE WHEEL WRENCHES (STD)	12
HINGE PIN	8	YOKES, STRONGBACK	7



DOVER MARINE MFG. & SUPPLY CO., INC.

98 NORTH INDUSTRY CT • DEER PARK, NY 11729

E-mail: sales@dovermfg.com

Web site: www.dovermfg.com



FAX: (631) 667-4302

PHONE: (631) 667-4300/1

MARINE PRODUCTS BUILT TOUGH

Dover Marine Manufacturing & Supply Co., Inc. has been manufacturing a complete line of industrial marine hardware, hatches and equipment since 1957. We manufacture exclusively in the United States and supply our products to ocean going, inland waterway, military vessels, as well as chemical, petroleum and offshore industries worldwide. Our comprehensive standard product line is available from stock and ready for same-day shipment. We also offer customized fabrication of other non-stock products with attention to rapid turn around.

Dover Marine is a brand name that is recognized and trusted by customers around the world for its quality, durability, and value. Dover Marine is the preferred choice requested by operations and procurement personnel in both defense and private sector.

For over 50 years, Fortune 100 companies, the US Department of Defense, as well as foreign companies around the world have chosen and are continuously specifying Dover Marine products. Dover Marine enjoys a loyal customer base because we are committed to excellence and recognize and respond to the needs of our customers. We appreciate your continued patronage.

MARINE SPECIALTY EQUIPMENT AND HARDWARE

Hatch Bolts



Ullage Covers



Portlights98



Deck Covers



Deck Cover
Locking Dogs



Gratings



Watertight Door
Dogs



Valve Wheel
Wrenches



**WING NUTS
N-1801**



**SWING NUTS
N-1802**



N-1801 WING NUTS

Part Number	Overall Wing Span	Hub Diameter	Hub Thickness	Tap
N-1801-375X03	3"	7/8"	5/8"	3/8"
N-1801-500X04	4"	1"	3/4"	1/2"
N-1801-500X05	5"	1"	5/8"	1/2"
N-1801-625X05	5"	1"	5/8"	5/8"
N-1801-625X06	6"	1-3/8"	3/4"	5/8"
N-1801-750X06	6"	1-3/8"	3/4"	3/4"
N-1801-750X08	8"	1-5/8"	1-1/8"	3/4"
N-1801-875X06	6"	1-3/8"	3/4"	7/8"
N-1801-875X08	8"	1-5/8"	1-1/8"	7/8"
N-1801-875X10	10"	1-7/8"	1-3/4"	7/8"
N-1801-1000X10	10"	2"	1-1/2"	1"

N-1802 SWING NUTS

Part Number	Overall Wing Span	Hub Diameter	Hub Thickness	Tap
N-1802-375	2"	7/8"	5/8"	3/8"
N-1802-500	3"	1"	5/8"	1/2"
N-1802-625	3"	1"	5/8"	5/8"
N-1802-750	3-1/2"	1-1/4"	3/4"	3/4"
N-1802-875	5-1/4"	1-3/8"	7/8"	7/8"
N-1802-1000	7"	2"	1-1/8"	1"

*We invite your inquiries on the listed products
as well as your specialized requirements.*

**PERFORMANCE, SERVICE AND QUALITY ARE OUR MOST IMPORTANT PRODUCTS.
PROMPT DELIVERIES FROM OUR FACTORY.**

DOG BOLT WITH WING NUT

Manganese Bronze, Stainless Steel or Steel



D-2307								
Dog Bolt with Wing Nut								
Diameter		1/4"	3/8"	1/2"	5/8"	3/4"	7/8"	1"
Wing Span		3"	3"	4"	5"	6"	8" 10" *	10"
L E N G T H	2"	D-2307-250X02	D-2307-375X02	D-2307-500X02	—	—	—	—
	3"	D-2307-250X03	D-2307-375X03	D-2307-500X03	D-2307-625X03	—	—	—
	4"	D-2307-250X04	D-2307-375X04	D-2307-500X04	D-2307-625X04	D-2307-750X04	—	—
	5"	D-2307-250X05	D-2307-375X05	D-2307-500X05	D-2307-625X05	D-2307-750X05	D-2307-875X05	—
	6"	—	D-2307-375X06	D-2307-500X06	D-2307-625X06	D-2307-750X06	D-2307-875X06	D-2307-1000X06
	7"	—	—	D-2307-500X07	D-2307-625X07	D-2307-750X07	D-2307-875X07	D-2307-1000X07
	8"	—	—	D-2307-500X08	D-2307-625X08	D-2307-750X08	D-2307-875X08	D-2307-1000X08
	9"	—	—	D-2307-500X09	D-2307-625X09	D-2307-750X09	D-2307-875X09	D-2307-1000X09
	10"	—	—	—	D-2307-625X10	D-2307-750X10	*D-2307-875X10	D-2307-1000X10
	11"	—	—	—	—	—	*D-2307-875X11	D-2307-1000X11
	12"	—	—	—	—	—	*D-2307-875X12	D-2307-1000X12

DOG BOLT ONLY

Manganese Bronze, Stainless Steel or Steel



D-2000								
Dog Bolt Only								
Diameter		1/4"	3/8"	1/2"	5/8"	3/4"	7/8"	1"
L E N G T H	2"	D-2000-250X02	D-2000-375X02	D-2000-500X02	—	—	—	—
	3"	D-2000-250X03	D-2000-375X03	D-2000-500X03	D-2000-625X03	—	—	—
	4"	D-2000-250X04	D-2000-375X04	D-2000-500X04	D-2000-625X04	D-2000-750X04	—	—
	5"	D-2000-250X05	D-2000-375X05	D-2000-500X05	D-2000-625X05	D-2000-750X05	D-2000-875X05	—
	6"	—	D-2000-375X06	D-2000-500X06	D-2000-625X06	D-2000-750X06	D-2000-875X06	D-2000-1000X06
	7"	—	—	D-2000-500X07	D-2000-625X07	D-2000-750X07	D-2000-875X07	D-2000-1000X07
	8"	—	—	D-2000-500X08	D-2000-625X08	D-2000-750X08	D-2000-875X08	D-2000-1000X08
	9"	—	—	D-2000-500X09	D-2000-625X09	D-2000-750X09	D-2000-875X09	D-2000-1000X09
	10"	—	—	—	D-2000-625X10	D-2000-750X10	D-2000-875X10	D-2000-1000X10
	11"	—	—	—	—	—	D-2000-875X11	D-2000-1000X11
	12"	—	—	—	—	—	D-2000-875X12	D-2000-1000X12

METRIC DOG BOLT WITH WING NUT

Manganese Bronze



D-2307 M							
Dog Bolt with Wing Nut							
Diameter		10 mm	12 mm	16 mm	20 mm	22 mm	24 mm
Wing Span		75 mm	100 mm	125 mm	150 mm	200 mm *250 mm	250 mm
L E N G T H	60 mm	D-2307M-10X60	D-2307M-12X60	—	—	—	—
	80 mm	D-2307M-10X80	D-2307M-12X80	D-2307M-16X80	—	—	—
	100 mm	D-2307M-10X100	D-2307M-12X100	D-2307M-16X100	D-2307M-20X100	—	—
	120 mm	D-2307M-10X120	D-2307M-12X120	D-2307M-16X120	D-2307M-20X120	D-2307M-22X120	—
	140 mm	D-2307M-10X140	D-2307M-12X140	D-2307M-16X140	D-2307M-20X140	D-2307M-22X140	D-2307M-24X140
	160 mm	D-2307M-10X160	D-2307M-12X160	D-2307M-16X160	D-2307M-20X160	D-2307M-22X160	D-2307M-24X160
	180 mm	—	D-2307M-12X180	D-2307M-16X180	D-2307M-20X180	D-2307M-22X180	D-2307M-24X180
	200 mm	—	D-2307M-12X200	D-2307M-16X200	D-2307M-20X200	D-2307M-22X200	D-2307M-24X200
	220 mm	—	D-2307M-12X220	D-2307M-16X220	D-2307M-20X220	D-2307M-22X220	D-2307M-24X220
	240 mm	—	—	D-2307M-16X240	D-2307M-20X240	*D-2307M-22X240	D-2307M-24X240
	260 mm	—	—	D-2307M-16X260	D-2307M-20X260	*D-2307M-22X260	D-2307M-24X260
	280 mm	—	—	—	—	*D-2307M-22X280	D-2307M-24X280
	300 mm	—	—	—	—	*D-2307M-22X300	D-2307M-24X300

**For Wing Nuts
& Swing Nuts,
See Our
Ad Page**



DOVER MARINE MFG. & SUPPLY CO., INC.

Manufacturers of Industrial Marine Equipment
98 North Industry Ct. • Deer Park, NY 11729
Telephone: 631-667-4300/1 • Fax: 631-667-4302
E-mail: sales@dovermfg.com
Web site: www.dovermfg.com

**For Wing Nuts
& Swing Nuts,
See Our
Ad Page**

When ordering, please specify manganese bronze, stainless steel or steel.

**DOG BOLT
& SWING NUT**



**EYE BOLT
& SWING NUT**



**JAW DOG
& WING NUT**



**TANK / HATCH COVER
DOG & WING NUT**



D-2300 Dog Bolt & Swing Nut		
Part Number	Size	W/S
D-2300-500X06	1/2" x 6"	4"
D-2300-625X07	5/8" x 7"	4"
D-2300-750X06	3/4" x 6"	4"
D-2300-750X08	3/4" x 8"	4"
D-2300-875X06	7/8" x 6"	6"
D-2300-875X08	7/8" x 8"	6"

D-2301 Eye Bolt & Swing Nut		
Part Number	Size	W/S
D-2301-500X06	1/2" x 6"	3"
D-2301-500X08	1/2" x 8"	3"
D-2301-625X06	5/8" x 6"	3-1/2"
D-2301-625X08	5/8" x 8"	3-1/2"
D-2301-750X06	3/4" x 6"	5-1/2"
D-2301-750X08	3/4" x 8"	5-1/2"
D-2301-875X06	7/8" x 6"	5-1/2"
D-2301-875X09	7/8" x 9"	5-1/2"

D-2302 Jaw Dog & Wing Nut		
Part Number	Size	W/S
D-2302-375X06	3/8" x 6"	3"
D-2302-500X06	1/2" x 6"	4"
D-2302-625X05	5/8" x 5"	5"
D-2302-750X06	3/4" x 6"	6"
D-2302-875X10	7/8" x 10"	8"

D-2303 Hatch Dog & Wing Nut		
Part Number	Size	W/S
D-2303-875x10	7/8" x 10"	10"
D-2303-875x11	7/8" x 11"	10"
D-2303-875x12	7/8" x 12"	10"
D-2303-875x13	7/8" x 13"	10"
Acme Thread		

D-2304 Tank / Hatch Dog & Wing Nut		
Part Number	Size	W/S
D-2304-875X07	7/8" x 7"	8"
D-2304-875X08	7/8" x 6"	8"
D-2304-875X09	7/8" x 9"	8"

**SKYLIGHT DOG
& WING NUT**



D-2305 Skylight Dog & Wing Nut		
Part Number	Size	W/S
D-2305-500X06	1/2" x 6"	4"
D-2305-625X06	5/8" x 6"	5"
D-2305-750X05	3/4" x 5"	6"
D-2305-750X06	3/4" x 6"	6"
D-2305-750X08	3/4" x 8"	6"

**VENT DOG &
BUTTERFLY NUT**



D-2306 Vent Dog & Butterfly Nut		
Part Number	Size	W/S
D-2306-375X06	3/8" x 6"	1-3/8"
D-2306-500X06	1/2" x 6"	1-7/8"
D-2306-625X06	5/8" x 6"	2-5/8"
D-2306-750X06	3/4" x 6"	3-1/2"

**SHAPED HEAD DOG
& HEX NUT**



D-2308 Shaped Head Dog Hex Nut		
Part Number	Size	W/S
D-2308-625X05	5/8" x 5"	5"
D-2308-750X05	3/4" x 5"	5"

**Metric Threads
Toggle Pins
Hinge Pins
Shoulder Eye
Bolts**



DOVER MARINE MFG. & SUPPLY CO., INC.

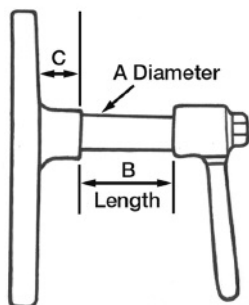
Manufacturers of Industrial Marine Equipment
98 North Industry Ct. • Deer Park, NY 11729
Telephone: 631-667-4300/1 • Fax: 631-677-4302
E-mail: sales@dovermfg.com
Web site: www.dovermfg.com

**Swing Nuts
Washer Faced Hex
Nuts
Portlight Dogs**

WATERTIGHT DOOR DOGS

Manganese Bronze or Aluminum

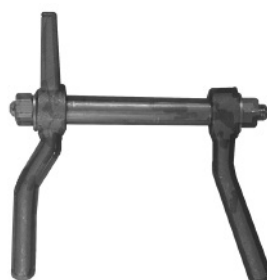
To order, specify: 1) Item number, 2) Right hand, left hand or neutral, 3) Shaft diameter (A), 4) Shaft length (B)



Please note:
The A and B references
in the above diagram apply
to the dogs on this page
and on the following page.



WTD 3400
Left, right or neutral



WTD 3401
Neutral only



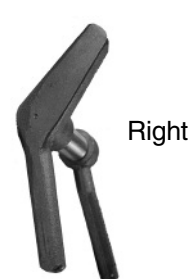
WTD 3402
Left, right or neutral



Right



Neutral



Right



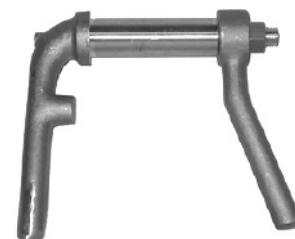
WTD 3403
Left, right or neutral



WTD 3404
Neutral only



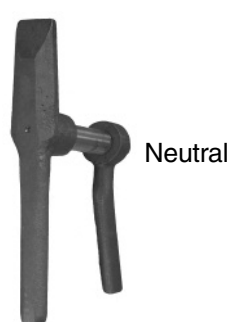
WTD 3405
Neutral only



WTD 3406
Neutral only



Right



Neutral



Neutral

**Expandable
Scupper Plugs
Deck Cover Plates
Ullage Covers**



DOVER MARINE MFG. & SUPPLY CO., INC.

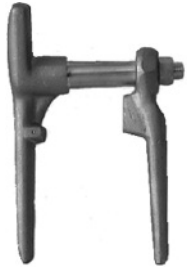
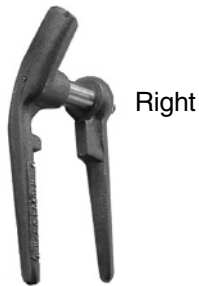
Manufacturers of Industrial Marine Equipment
98 North Industry Ct. • Deer Park, NY 11729
Telephone: 631-667-4300/1 • Fax: 631-667-4302
E-mail: sales@dovermfg.com
Web site: www.dovermfg.com

**Ullage Screens
Flanges
Rubber Tanker
Buckets**

WATERTIGHT DOOR DOGS (cont'd.)

Manganese Bronze or Aluminum

To order, specify: 1) Item number, 2) Right hand, left hand or neutral, 3) Shaft diameter (A), 4) Shaft length (B)

**WTD 3407**
Left or right**WTD 3408**
Left, right or neutral**WTD 3409**
Neutral only**WTD 3410**
Neutral only

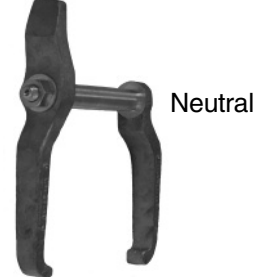
Right



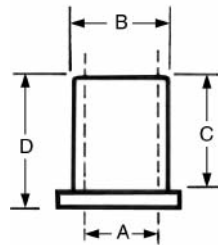
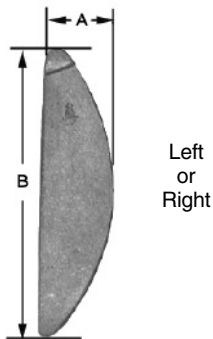
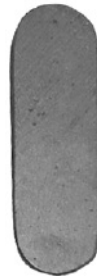
Right



Neutral



Neutral

WATERTIGHT DOOR BUSHINGS**WTD 3402A**
Specify A, B & D.**WTD 3402B**
Specify A, B, C & D.**WTD-3600**
WASHER/SHIM
Specify I.D., O.D. & thickness.Left
or
RightLeft
or
Right**BRONZE DOOR WEDGES**

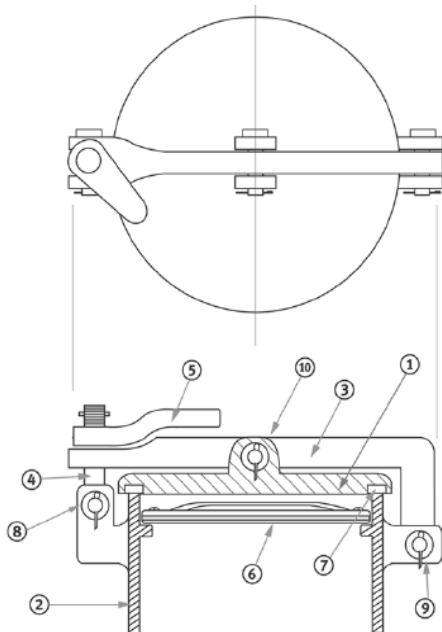
	WTD-3405t	WTD-3405u	WTD-3405v	WTD-3405w	WTD-3405x	WTD-3405y	WTD-3405z
A	1-1/4"	1-1/4"	1"	1-3/8"	1"	1-3/8"	1-3/8"
B	4-1/2"	5"	4-1/2"	4-1/2"	5-1/2"	5-3/4"	3-3/4"

**Expandable
Scupper Plugs
Deck Cover Plates
Ullage Covers**

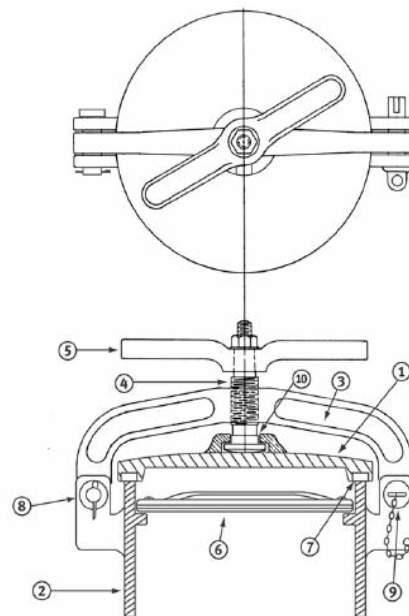
**DOVER MARINE MFG. & SUPPLY CO., INC.**

Manufacturers of Industrial Marine Equipment
98 North Industry Ct. • Deer Park, NY 11729
Telephone: 631-667-4300/1 • Fax: 631-667-4302
E-mail: sales@dovermfg.com
Web site: www.dovermfg.com

**Ullage Screens
Flanges
Rubber Tanker
Buckets**



ULLAGE ASSEMBLIES



U-2509

Schedule of Materials

Pc. No.	Description	Material
1	Cover	Steel
2	Coaming	Steel
3	Yoke	Manganese Bronze
4	Dog Bolt	Manganese Bronze
5	Swing Nut	Manganese Bronze
6	Flame Screen	Bronze
7	Gasket	Neoprene
8	Clevis Type Hinge Pin	Brass
9	Clevis Type Hinge Pin	Brass
10	Clevis Type Hinge Pin	Brass

Sizes available: 6", 8", 10" and 12"

U-2500-A

Schedule of Materials

Pc. No.	Description	Material
1	Cover	Bronze
2	Coaming	Steel
3	Yoke	Manganese Bronze
4	Stem	Brass
5	Handle	Manganese Bronze
6	Flame Screen	Bronze
7	Gasket	Neoprene
8	Clevis Type Hinge Pin	Brass
9	Toggle Pin	Bronze
10	Keeper Plate	Bronze

Sizes available: 6", 8", 10" and 12"

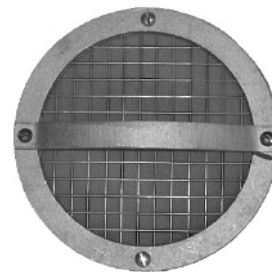
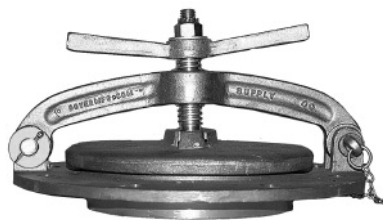
BRONZE ULLAGE ASSEMBLY

Complete with Flange

ULLAGE SCREEN

MINI ULLAGE ASSEMBLY

Complete with steel coaming, bronze cover, screen, dog bolt & wing nut



U-2600

Part Number	Pipe Size
U-2600-35	3-1/2"
U-2600-40	4"

U-2500

Part Number	Size
U-2500-06	6"
U-2500-08	8"
U-2500-10	10"
U-2500-12	12"

U-2503

Part Number	Size
U-2503-06	6"
U-2503-08	8"
U-2503-10	10"
U-2503-12	12"
U-2503-SPC	Special up to 20"

Wire Cloth
Ullage Covers
Coamings
Dog Bolts



DOVER MARINE MFG. & SUPPLY CO., INC.

Manufacturers of Industrial Marine Equipment
98 North Industry Ct. • Deer Park, NY 11729
Telephone: 631-667-4300/1 • Fax: 631-667-4302
E-mail: sales@dovermfg.com
Web site: www.dovermfg.com

Deck Covers
Deck Drains
Scupper Strainers
"T" Bolts

U-2500-A

Please specify 6", 8", 10" or 12" pipe.

U-2500A REPLACEMENT PARTS

Bronze or Aluminum



1.



3.



4.



5.



8.



9.



10.

1.	Cover Plate with Gasket
3.	Strong Back (Yoke)
4.	Acme Threaded Stem and Hex Nut
5.	Wing Nut (Handle)
8.	Clevis Pin with Washer and Cotter Pin
9.	Toggle Pin with Chain
10.	Keeper Plate and Screw

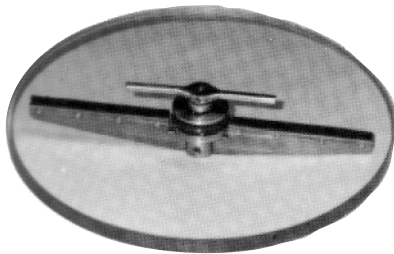
**U-2501
ULLAGE COVERS**

Specify for 6", 8", 10" or 12" pipe sizes.

**U-2504
ULLAGE SCREENS**

Light duty brass ullage screen with double fine stainless steel mesh.

To Order, Specify: 1) Flange O.D.,
2) Body O.D., and 3) Overall Height

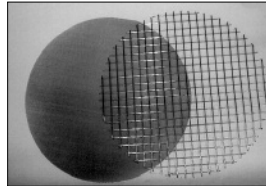
**U-2502
STRONGBACK YOKES**

Complete with Acme threaded Stem, Hex Nut, Wing Nut (Handle), Toggle Pin with Chain, Hinge Pin, Washers and Cotters.

U-2504	
Part Number	Pipe Size
U-2504-06	6"
U-2504-08	8"
U-2504-10	10"
U-2504-12	12"
U-2504-SPC	Special up to 20"

U-2508**CARGO TANK TOP INSPECTION
SIGHT WITH DEMISTING WIPER**

Brass or Stainless Steel wiper fittings with rubber wiper blades. Specify O.D. and glass thickness.

**REPLACEMENT MESH**

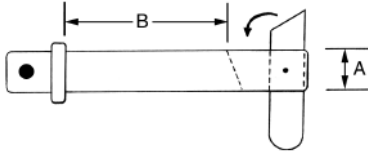
U-2506-F: Fine 30 x 30 mesh.
U-2506-C: Coarse 2 x 2 mesh.
Furnished in any diameter in stainless steel and brass.

Toggle Pins
Ullage Cover
Gaskets
Jack Chain

**DOVER MARINE MFG. & SUPPLY CO., INC.**

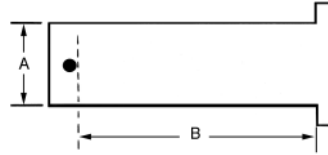
Manufacturers of Industrial Marine Equipment
98 North Industry Ct. • Deer Park, NY 11729
Telephone: 631-667-4300/1 • Fax: 631-667-4302
E-mail: sales@dovermfg.com
Web site: www.dovermfg.com

Deck Drains
Sampling Bottles
Sounding Plugs



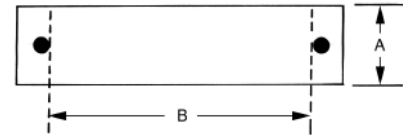
**TP-3100
TOGGLE PIN**

Specify material & dimensions.

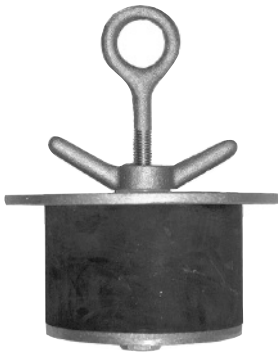


**R-4301
CLEVIS PIN**

Specify material and dimensions.



**R-4300
HINGE PIN**



**R-3803
EXPANDABLE
SCUPPER PLUGS**

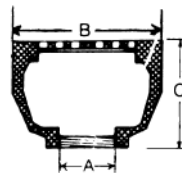
Bronze with Neoprene sleeve



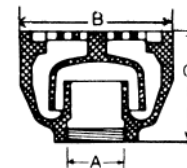
**R-3803-S
REPLACEMENT
NEOPRENE
SLEEVES**

HEAVY DUTY BRONZE DECK DRAINS

Pipe Size Dim. "A"	Diameter Dim. "B"	Height Dim. "C"
1-1/2"	4-7/8"	3-7/8"
2"	5-3/4"	4"
2-1/2"	6-7/8"	4-9/16"
3"	7-7/8"	5-1/8"



R3807
Drain with
Trap



R3805
Drain with
Trap & Baffle

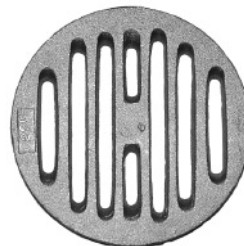
Part Number	Plug Size	Bore
R-3803-10	1"	1-1/2"
R-3803-15	1-1/2"	2"
R-3803-20	2"	2-1/2"
R-3803-25	2-1/2"	3"
R-3803-30	3"	3-1/2"
R-3803-35	3-1/2"	4"
R-3803-40	4"	4-1/2"
R-3803-45	4-1/2"	5"
R-3803-50	5"	5-1/2"
R-3803-55	5-1/2"	6"
R-3803-65	6-1/2"	7"
R-3803-70	7"	7-1/2"
R-3803-775	7-3/4"	8"

Part Number
R-3803-S-10
R-3803-S-15
R-3803-S-20
R-3803-S-25
R-3803-S-30
R-3803-S-35
R-3803-S-40
R-3803-S-45
R-3803-S-50
R-3803-S-55
R-3803-S-65
R-3803-S-70
R-3803-S-775



**R-3802
BRONZE STRAINER**

With baffle for H.D. 1-1/2" or 2" deck drain. Center screw connection. Specify deck drain size and O.D. of strainer plate.



**R-3800
BRONZE DECK SCUPPER
STRAINER PLATES**

Sizes: 3", 3-1/2", 4",
4-1/2", 5", 5-1/2" & 6",
6-1/2", 7", 7-1/2", 8",
8-1/2", 9", 9-1/2", 10",
10-1/2", 11", 11-1/2", 12"

**"T" Wrenches
Deck Covers
Open Flanges**



DOVER MARINE MFG. & SUPPLY CO., INC.

Manufacturers of Industrial Marine Equipment
98 North Industry Ct. • Deer Park, NY 11729
Telephone: 631-667-4300/1 • Fax: 631-667-4302
E-mail: sales@dovermfg.com
Web site: www.dovermfg.com

**Blind Flanges
Scupper Strainers
Strainer Plates**



3002 PORTLIGHT SCREENS

Type A - Galvanized rim,
stainless steel mesh.
Type B - Brass rim, stainless steel mesh.
Type C - Stainless steel rim and mesh.
Specify portlight size when ordering.

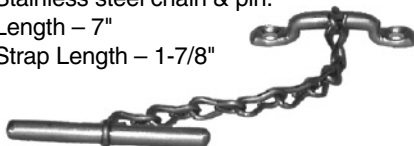


3000 PORTLIGHT SCREEN WITH RUBBER SCOOP

Type A - Galvanized frame, rubber
scoop, stainless steel mesh.
Type B - Brass frame, rubber scoop,
stainless steel mesh.
Type C - Stainless steel frame,
rubber scoop, stainless
steel mesh.
Specify portlight size when ordering.

PH-3351 PORTLIGHT CHAIN

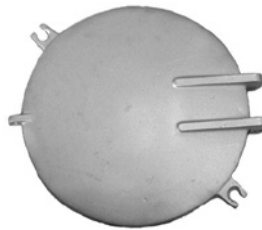
Stainless steel chain & pin.
Length - 7"
Strap Length - 1-7/8"



PH-3303 BRONZE OR ALUMINUM PORTLIGHTS

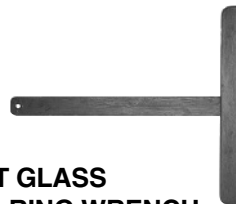
Available with or without cover.
Sizes - 8", 10", 12", 14", 15", 16", 18".
Specify size and bulkhead thickness.

Parts available:
PH-3307 Retaining ring wrench
PH-3308 Retaining ring (bezel)



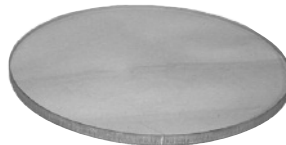
PH-3309 ALUMINUM PORTLIGHT COVER

Specify portlight size when ordering.



PH-3307 PORTLIGHT GLASS RETAINING RING WRENCH

Steel construction.
Specify portlight size.



PH-3306 PORTLIGHT GLASS

Specify glass O.D. and thickness.

BRONZE PORTLIGHT DOGS WITH ACME THREADS



PH-3300
with oblong nut



PH-3301
with diamond nut



PH-3302
with round nut



PH-3310
Dog & nut



PH-3304 with securing plate
(2" x 2-1/4" x 3/8")

Portlight Dogs & Nuts Acme or Standard Thread		
Part. No.	Diameter	Length
PH-3300-625X04	5/8"	4"
PH-3300-625X05	5/8"	5"
PH-3300-750X05	3/4"	5"
PH-3301-625X04	5/8"	4"
PH-3301-750X04	3/4"	4"
PH-3302-625X04	5/8"	4"
PH-3302-625X05	5/8"	5"
PH-3302-750X04	3/4"	4"
PH-3302-750X05	3/4"	5"
PH-3304-500X04	1/2"	4"
PH-3304-625X04	5/8"	4"
PH-3304-750X04	3/4"	4"
PH-3310-500X03	1/2"	3"
PH-3310-500X04	1/2"	4"
PH-3310-625X04	5/8"	4"

**Fixed Portlights
Portlight Glass
Retaining (Bezel)
Rings**



DOVER MARINE MFG. & SUPPLY CO., INC.

Manufacturers of Industrial Marine Equipment
98 North Industry Ct. • Deer Park, NY 11729
Telephone: 631-667-4300/1 • Fax: 631-667-4302
E-mail: sales@dovermfg.com
Web site: www.dovermfg.com

**Ring Nuts
Anti-Pilfering
Screens
Retaining Ring
Wrenches**

G-1904

Top View



Bottom View



G-1904-B
TRI-CLAMP
Manganese Bronze



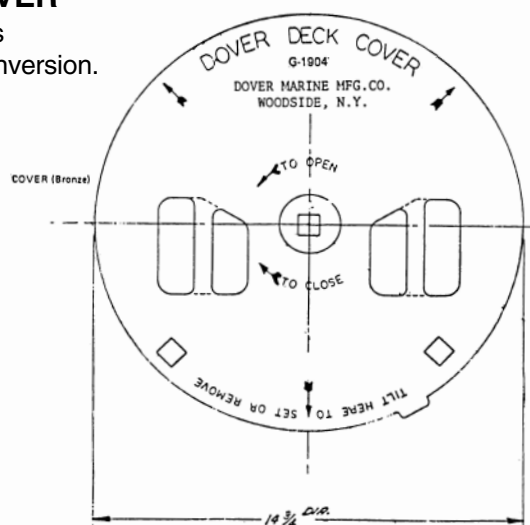
G-1904-C
CLAMP SCREW
(Manganese Bronze)

RAPID ACTION DECK COVER

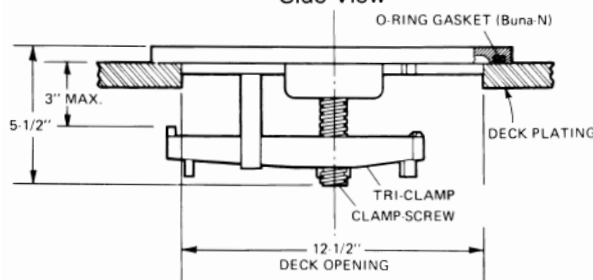
For Tank-Cleaning Openings
Suitable for new construction and conversion.

Weight: 31 lbs. Approx.

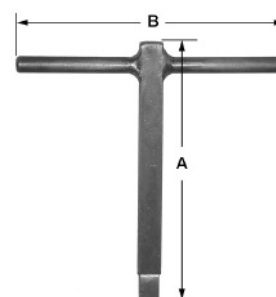
Dover Deck Covers can be used as tank ventilators in place of ventilating gratings. They can be quickly set over the opening and remain stable.



Side View



Outer O-ring Seal
(Buna N)
13\" I.D. x 1/2"

**G-1905**

T-4000-B
"T" WRENCH
Brass (or as specified)

- RAPID-SINGLE ACTION TO OPEN OR CLOSE WITH WRENCH.
- FLAT, WITH NO PROJECTIONS, PROVIDING MAXIMUM SAFETY.
- INSTALLED IN SECONDS.

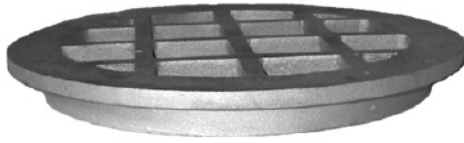
- REPLACEABLE O-RING SEAL.
- FITS STANDARD 12-1/2" DECK OPENING WITH ANY DECK THICKNESS UP TO 3".
- MATERIAL: BRONZE

**Expandable
Scupper Plugs
Deck Cover Plates
Ullage Covers**

**DOVER MARINE MFG. & SUPPLY CO., INC.**

Manufacturers of Industrial Marine Equipment
98 North Industry Ct. • Deer Park, NY 11729
Telephone: 631-667-4300/1 • Fax: 631-667-4302
E-mail: sales@dovermfg.com
Web site: www.dovermfg.com

**Ullage Screens
Flanges
Rubber Tanker
Buckets**



G-1901 / G-1901A
SAFETY ALUMINUM GRATING
FOR TANK CLEANING HOLES

G-1901 (Std.): 11-7/8" I.D. x 13-7/8" O.D.

G-1901A: 15" I.D. x 16-5/8" O.D.



G-1902
PLATE LIFTING STRAPS

For lifting tank cleaning plates
 Brass

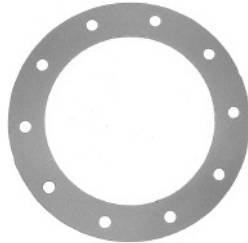
G-1900
TANK CLEANING HOLE
COVER PLATE

18" diameter
 11/16" thick
 10-7/8" bolt holes on a
 15-5/16" diameter bolt circle.
 Available in aluminum or bronze.



G-1908
COVER PLATE GASKET

Vegetable fiber, neoprene
 rubber or pressed
 fiberboard.



STUDS AND NUTS FOR SECURING
TANK CLEANING COVER PLATES



G-1900A
STUD

Brass or Stainless Steel



G-1906
 H.D. CAP NUT



G-1907
 H. D. HEX NUT



D-2312
DECK COVER
LOCKING DOG

With O-rings, hex nuts
 and square keys

Manganese Bronze

Dia: 3/4" Eye: 21/32"
 D-2312A – 5-3/8" O.A.L.
 D-2312B – 6-1/4" O.A.L.



D-2312-1
DECK COVER CAM

Manganese
 Bronze

"T" Wrenches
Deck Covers
Open Flanges



DOVER MARINE MFG. & SUPPLY CO., INC.

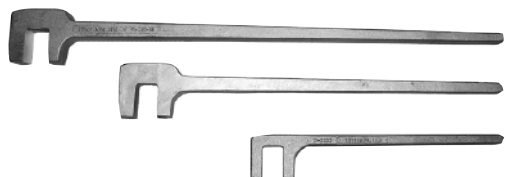
Manufacturers of Industrial Marine Equipment
 98 North Industry Ct. • Deer Park, NY 11729
 Telephone: 631-667-4300/1 • Fax: 631-667-4302
 E-mail: sales@dovermfg.com
 Web site: www.dovermfg.com

Blind Flanges
Scupper Strainers
Strainer Plates

VALVE WHEEL WRENCHES

**W-2201**

CLAW TYPE
Overall Length: 21"
Handle Diameter: 1-1/4"
Manganese Bronze

**W-2202**

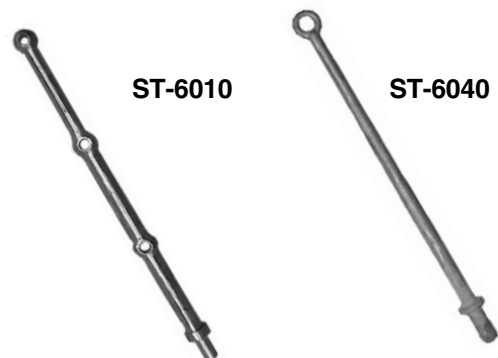
STANDARD TYPE
Lengths: 12", 14", 16", 18", 24" and 36"
Manganese Bronze or Aluminum

**G-1900-C**

Spanner, bronze, for 2" hose coupling


**P-4100A / P-4100B
BRONZE HOSE SPANNERS**

For hose couplings
P-4100A - 1-1/2" P-4100B - 2-1/2"

**ST-6010****ST-6040**

DECK & GANGWAY STANCHIONS

Cast Aluminum

DECK SOUNDING PLUGS

With 3/4" square 'T' wrench hole.
Bronze



No.	Thread Size
P-3900-1	1-1/2" NPT
P-3900-2	2" NPT
P-3900-3	2-1/2" NPT
P-3900-4	3" NPT
P-3900-5	3-1/2" NPT
P-3900-6	4"

BRASS JOINTED SOUNDING RODS

with attachment ring 7/16" Dia.,
graduated in 1" increments



No.	Length
SR-1000-1	3 ft.
SR-1000-2	4 ft.
SR-1000-3	6 ft.
SR-2000-M1	1 m
SR-2000-M2	2 m

SAMPLING BOTTLES & HOLDERS

(For Testing Fluids - 1 qt. Capacity)

**B-2410**
WIDE
NECK
BOTTLE

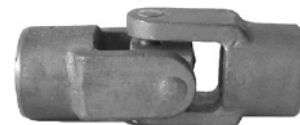
Brass
Dia.: 2-3/4"
Overall
Length: 21"

**B-2411**
NARROW
NECK
BOTTLE

Brass
Dia.: 2-3/4"
Overall
Length: 21"
Weighted Bottom

**B-2412**
BOTTLE
HOLDER

Steel or
stainless steel
Dia.: 4-5/8"
Overall Length: 19-1/4"
Holder: 8"

**DJ-2000
BRONZE
UNIVERSAL JOINT**
Standard Type


Cat. No.	Rod Sizes Available	Outside Diam.	Overall Length	Weight
DJ-2000-1	1/4", 1/2", 3/4"	1-5/8"	3-7/8"	2-1/2 lbs.
DJ-2000-2	7/8", 1", 1-1/8"	1-7/8"	7"	5 lbs.
DJ-2000-3	1-1/4", 1-1/2", 1-3/4"	2-3/4"	8-3/4"	12 lbs.

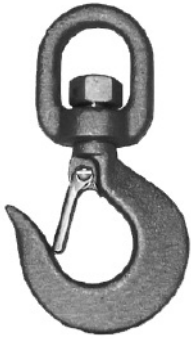
Actual rod size must be specified when ordering.

**Economy Deck
Drains
Traps & Baffles
Inv. Vent Ch. Valves
"J" Bolts**

**DOVER MARINE MFG. & SUPPLY CO., INC.**

Manufacturers of Industrial Marine Equipment
98 North Industry Ct. • Deer Park, NY 11729
Telephone: 631-667-4300/1 • Fax: 631-667-4302
E-mail: sales@dovermfg.com
Web site: www.dovermfg.com

**Scupper Strainers
Deck Sounding
Plugs
"T" Wrenches
"U" Bolts**



B-1093
MANGANESE BRONZE
SAFETY SWIVEL HOOK
 (With Stainless Steel Latches)

5" Overall length; 1" Eye
 For mucking winch cables



B-2402
ALUMINUM TANK
CLEANING HOE
 (For Scraping between Coils)
 Blade 3" x 6"

SLUDGE SCOOPS



B-2515
 DIE STAMPED ALUMINUM



B-2401
 CAST ALUMINUM H.D.



B-2520
 NON-SPARKING
 POLYPROPYLENE

No.	Material	Length	Width
B-2515	Alum. Die Stamped	10-3/4"	4-1/4"
B-2516	Alum. Die Stamped with Wooden Insert	13-3/4"	4-1/4"
B-2401	Cast Aluminum (Heavy Duty)	12-3/4"	4-1/2"
B-2520	Polypropylene H.D.	13-3/4"	4"

NON-SPARKING TANKER PAILS

Reinforced rubber fiber. Contains neoprene.
 Brass bail.



TA41-10L
 With
 Safety Bail



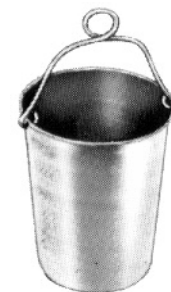
TA41-10

Model No.	Capacity	Approx. Gross Wt. (Per Doz.)	Approx. Dimensions	
			Top Dia.	Height
TA41-10L	10 Qt.	36 lbs.	10-1/4"	12-1/4"
TA41-10	10 Qt.	36 lbs.	10-1/4"	12-1/4"

ALUMINUM TANK CLEANING BUCKET



B-2600
 15 Quarts
 O.D. 10"
 Ht. 11"
 Heavy Duty



B-2400
 15 Quarts
 O.D. 10"
 Ht. 11"



STAINLESS STEEL NON-SPINNING CABLE

For mucking winches.
 3/16" Cable with bronze safety swivel hook.

B-1095-A 100' length
B-1095-B 150' length
B-1095-C 200' length

Safety Gratings
Mucking Winch
Cables
Safety Hooks
Exp. Scupper Plugs



DOVER MARINE MFG. & SUPPLY CO., INC.

Manufacturers of Industrial Marine Equipment
 98 North Industry Ct. • Deer Park, NY 11729
 Telephone: 631-667-4300/1 • Fax: 631-667-4302
 E-mail: sales@dovermfg.com
 Web site: www.dovermfg.com

Tank Cover Plates
Sludge Scoops
Cleaning Hoes
Scrapers

SB-2004 PERFORATED METAL STRAINER BASKETS

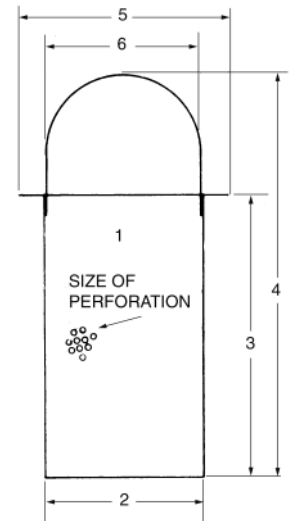


Available in Steel, Brass & Stainless Steel.
See basket data specification form below.
Specify material, perforation (and mesh size if required for inner liner).

BASKET DATA

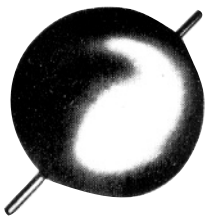
Insert dimensions (in inches) opposite the numbers indicated.

1. Perforation Size
2. Bottom Diameter
3. Height of Basket
4. Height, Overall
5. Dia. across Flange
6. Top Diameter



BALL FLOATS

Stainless Steel or Copper



F-2600

Specify ball diameter, as well as length & diameter of tubing.



F-2600-C

Spherical Shaped Floats.
Specify diameter, length, coupling thread and material.



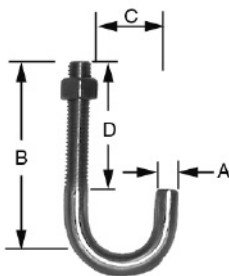
F-2602-S

With coupling specify diameter, coupling thread and material.

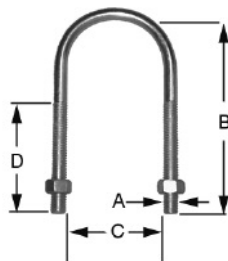


F2602-V

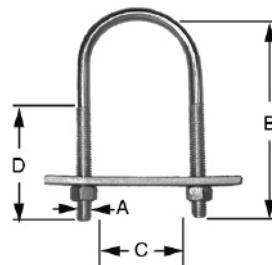
For Vent Check Valves
Specify diameter and material.



H-3500
"J" BOLTS
With Hex Nuts



H-3600
"U" BOLTS
With Hex Nuts



H-3600-A
"U" BOLTS
With Strap Washers & Hex Nuts

Specify: A, B, C, & D
and material.

**Rust Preventative
Lubricants
Strainers
Inverted Vent
Check Valves**



DOVER MARINE MFG. & SUPPLY CO., INC.

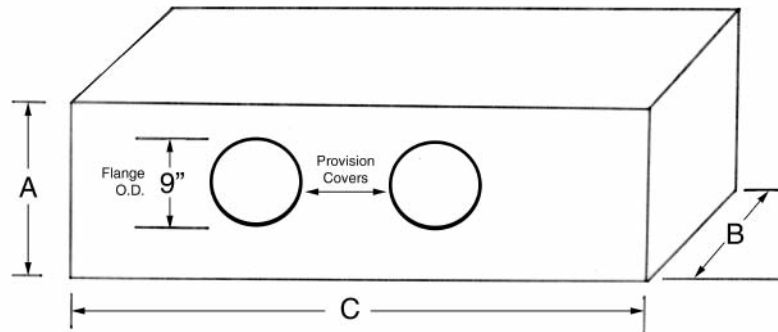
Manufacturers of Industrial Marine Equipment
98 North Industry Ct. • Deer Park, NY 11729
Telephone: 631-667-4300/1 • Fax: 631-667-4302
E-mail: sales@dovermfg.com
Web site: www.dovermfg.com

**Threaded Studs
Tank Air
Escape Valve
Gratings**

LIFEBOAT PROVISION TANK

K-1500

Galvanized Steel
Construction
Airtight & Waterproof



When ordering, specify:

- 1) Dimensions A, B, & C
- 2) Number of covers
- 3) Location of covers
- 4) Material of covers (bronze or aluminum)

K-1500a**7" PROVISION TANK HINGED COVER**

Specify Bronze
or Aluminum



Closed Cover



Open Cover

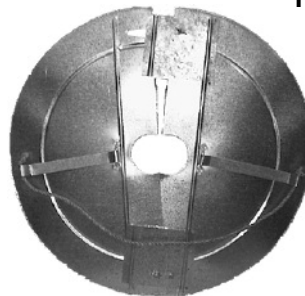
LIFE BOAT TANK DOGS & NUTS

K-1500b-1 Bronze
K-1500b-2 Aluminum

5/16" x 1-1/2" for use with
K-1500a cover assembly.

**G-950
FOG GONG**

2-1/4" Wide
16-3/16" Diameter
Steel with Rawhide
Mallet.

**RAT GUARDS**

RG100-1 – 36" Diameter
RG100-2 – 24" Diameter
Galvanized steel, rolled edges.
Adjusts for 1" to 3" diameter ropes.



RG-101 H.D.
24" wide x 30" high.
For rope sizes up to 3".
Galvanized steel
welded construction

**F-8000
ALUMINUM FID**
17-3/4" x 1-3/16"
Tapered



Spare Parts Boxes
Fuel Tanks
Eyebolts

**DOVER MARINE MFG. & SUPPLY CO., INC.**

Manufacturers of Industrial Marine Equipment
98 North Industry Ct. • Deer Park, NY 11729
Telephone: 631-667-4300/1 • Fax: 631-667-4302
E-mail: sales@dovermfg.com
Web site: www.dovermfg.com

Deck Stanchions
Toggle Pins
Ring Nuts